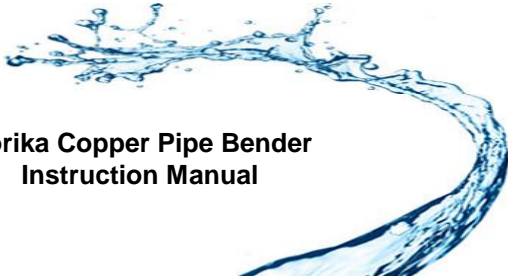


**Norika Copper Pipe Bender
Instruction Manual**



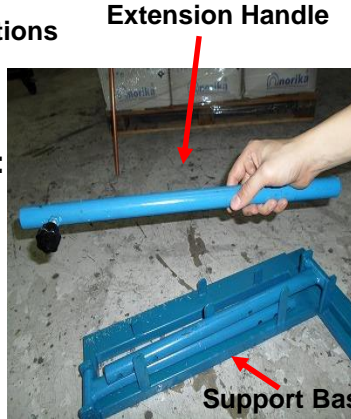
Copper Pipe Bender Instruction Instructions

Bender Mounting Bracket

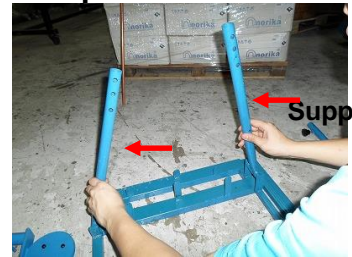


Bender Support Base
Image of support base parts

Step 1:



Step 2:



Position both support pillar at approximately 80°.

Bender Mounting

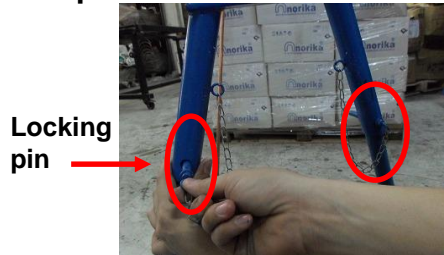
Remove handle from Support base.

Step 3:



Slot mounting into pillar

Step 4



Locking pin

Insert locking pin to secure both pillar.

Step 5:

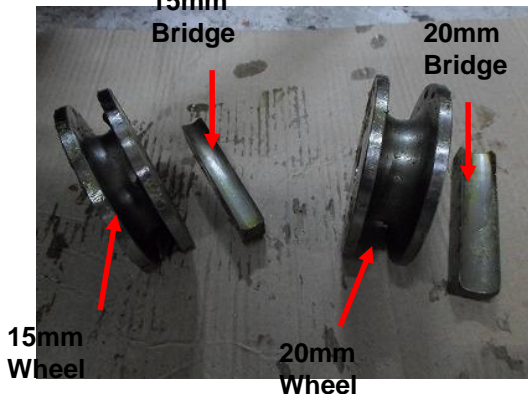
Bender



Install bender onto bender mounting

15mm Bridge

20mm Bridge



15mm Wheel

20mm Wheel

Step 6:

Wheel



Wheel Shaft

Slot bending wheel onto bender wheel's shaft.

Image of 15mm, 20mm wheel and respective bridge parts.

Step 7:



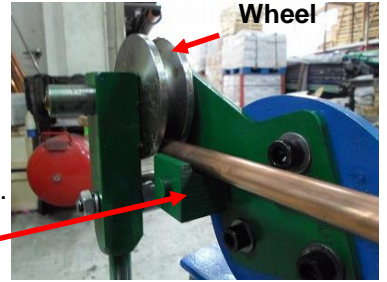
Bender handle

Step 8:



Handle Extension

Step 9:



Bender Wheel

Pipe Support

Slot in bender handle, after wheel is being installed.

Connect bender handle extender.

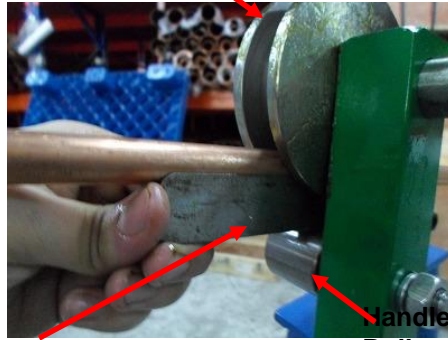


Image of pipe slotted into bender

Step 10:

Bender Wheel

Insert copper pipe or stainless steel pipe between pipe support and bender wheel.



Handle Roller



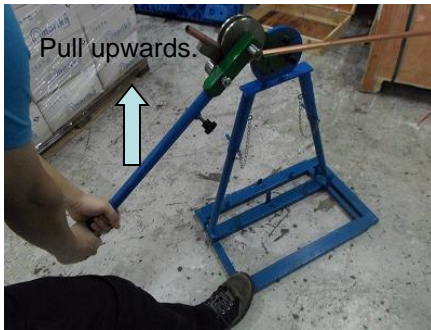
Bender Extension Bar

Step onto support base.

Bender bridge

Slot in bender bridge between wheel with pipe and handle roller.

Step 11:



Pull bender extension arm upwards.

a) Position foot on support base to prevent base from moving.

b) Grab on the bender handle's extension bar.



Step 12



Remove the bent copper pipe from bender.

Pull bender extension arm until pipe reaches, desired angle. For this example, pipe achieve 90°.



Pipe bending is completed reaching 90°.